

# VARCHART®



## VARCHART XTree ActiveX Control

Generate Hierarchical Structures and Tree Diagrams in your own Programming Environment.

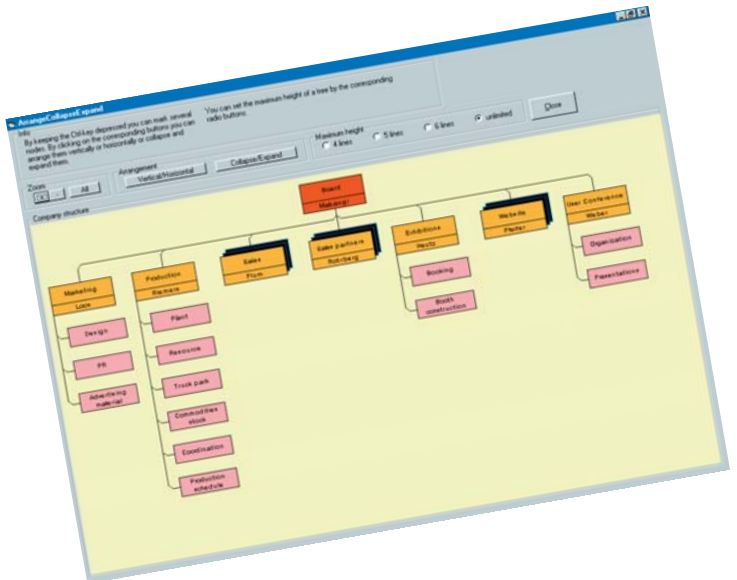
VARCHART XTree lets you implement an initial graphical representation of your data in a matter of minutes. You will benefit from the wide range of design options and can provide your customers with completely new views of their data.

VARCHART XTree lets you visualize, edit and print your data in the form of tree diagrams. VARCHART XTree is the perfect tool to display any kind of hierarchical structure, such as bills of materials, project planning diagrams, work breakdown structures or file systems or classifications in general. Not only general tree structures, but also specific styles such as the look of the Microsoft Explorer can be displayed (TreeView Style).

Data can be loaded and stored to CSV files or via the application programming interface (API). Single data can be inserted, modified or deleted by user interaction.

Interactions such as follows are available to the user:

- ▶ creating, deleting or moving nodes and subtrees
- ▶ editing data of nodes
- ▶ collapsing and expanding subtrees
- ▶ optimal layout of tree structures by a combination of horizontal and vertical arrangements of subtrees
- ▶ continuous zooming and autoscrolling of diagrams

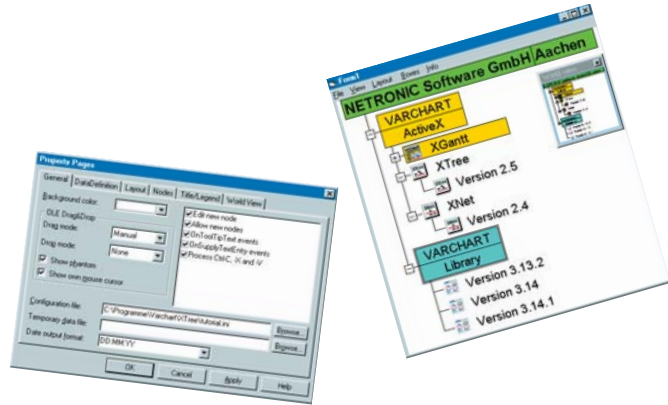


- ▶ integrated worldview (complete view)
- ▶ integrated printing functionality with paging and page previews, title and legend
- ▶ diagram export (formats: VMF, WMF, JPG, BMP, EPS, GIF, PCX, PNG, TIF)

VARCHART XTree offers to the user a variety of options to visualize data for different applications:

- ▶ You can choose, whether the structure of the tree is to be defined by a structure code or by the ID of the parent node.
- ▶ The appearance of nodes (color, format, background, graphics file (\*.bmp), etc.) can be specified by a variety of options.



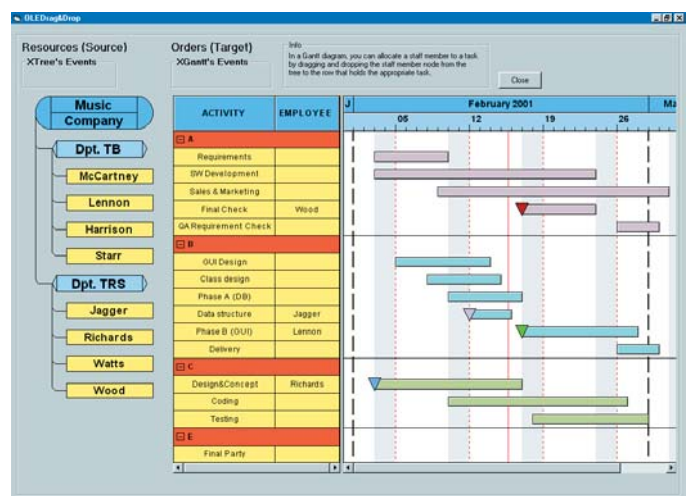


- ▶ The node appearance is assigned to the nodes in dependence on the data. (The data-controlled assignment is defined via maps or filters in form of Boole expressions.)
- ▶ Several data fields can be displayed in a node in any order, size, font etc.
- ▶ The appearance of link lines can be varied.
- ▶ The arrangement type and the state of collapsing can be stored.
- ▶ Nodes can be displayed in TreeView style.
- ▶ The total height of a tree diagram arranged vertically can be limited by the number of levels.
- ▶ OLE drag & drop operations in VARCHART XTree are compatible to the ones in Visual Basic. Methods, properties and events show identical names and results as the default objects of Visual Basic. Nodes or subtrees can be moved or copied via the OLE drag&drop mode.
- ▶ The VARCHART XTree control can be inserted into a HTML page so that it will be visible in a browser.

The diagrams can be customized via the property pages. The powerful Application Programming Interface offers an amount of further options that can be modified at run time. You can set all options to be adjusted by the user. Events let your application react to your customer's interactions (for example, to validate data). The Application Programming Interface contains an amount of properties, methods and events.

**Technical Requirements:**

a 32 bit operating system Microsoft Windows 9x/NT/2000; a development environment that supports the integration of ActiveX such as Visual-



Basic, VisualBasic for Applications, VisualFoxPro, Visual Objects, Delphi, Centura, Oracle Forms, Progress, HTML (JavaScript or VBScript), C, C++, etc.

**Services:**

- ▶ ActiveX component including documentation, tutorial, and online help
- ▶ Maintenance contract
- ▶ Hotline support
- ▶ Training classes
- ▶ Functional extensions on request
- ▶ Free trial version for download including 30 days hot-line support

**Licencing concept:**

Software Development Kit plus Runtime Fees, based on volume.



NETRONIC Software GmbH  
 Pascalstrasse 15  
 52076 Aachen  
 Germany  
 Phone +49 24 08 141-0  
 Fax +49 24 08 141-33  
 Email sales@netronic.com  
 www.netronic.com