

VARCHART®

VARCHART XNet ActiveX Control

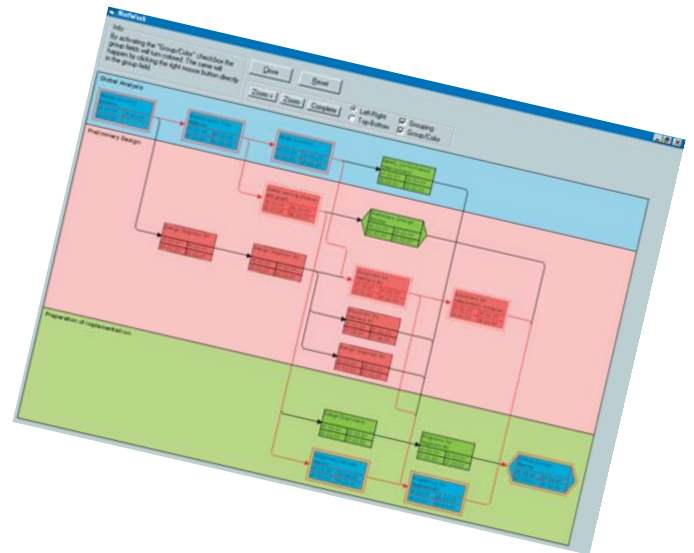
Generate Network and Work-flow Diagrams in your own Programming Environment.

VARCHART XNet lets you implement an initial graphical representation of your data in a matter of minutes. You will benefit from the wide range of design options and can provide your customers with completely new views of their data.

VARCHART XNet lets you visualize, edit and print your data in the form of network diagrams of annotated nodes and links. VARCHART XNet lets you display scenarios such as computer networks, work flow or class diagrams. For project management charts an integrated scheduling module is available. Data can be loaded and stored to CSV files or via the application programming interface (API). Single data can be inserted, modified or deleted by user interaction.

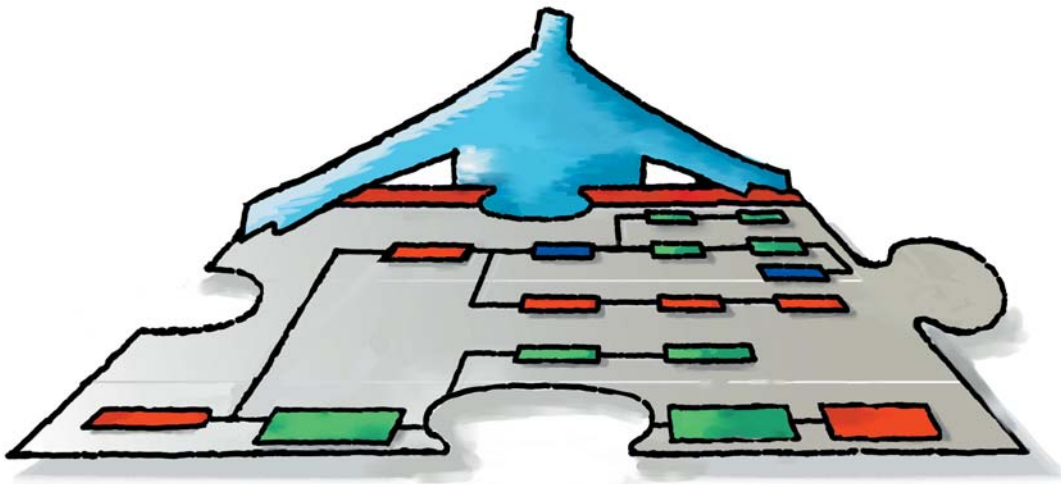
Interactions such as follows are available to the user:

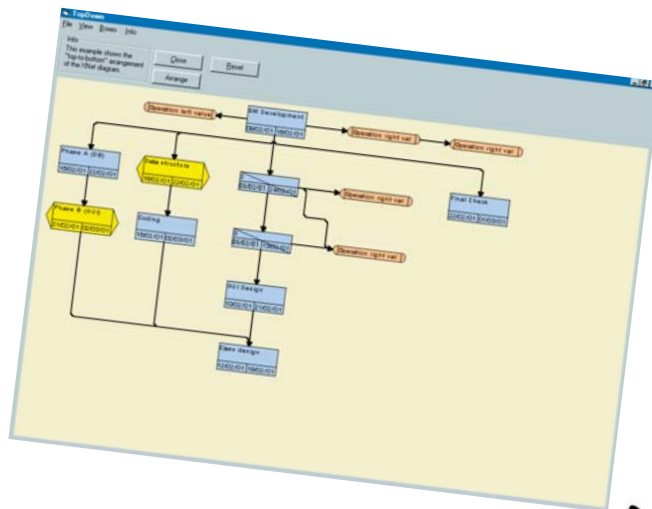
- ▶ creating, deleting or moving nodes and links
- ▶ editing data of nodes and links
- ▶ automatic layout of nodes to maintain clarity in large or complicated networks grouping after criteria and sorting of groups
- ▶ Nodes can be grouped by a data field individually defined. Groups can easily be identified by their title.
- ▶ adjusting the orientation of the network between "top to bottom" and "left to right"
- ▶ continuous zooming and autoscrolling of diagrams
- ▶ integrated worldview (complete view)
- ▶ integrated printing functionality with paging and page previews, title and legend
- ▶ diagram export (formats: VMF, WMF, JPG, BMP, EPS, GIF, PCX, PNG, TIF)



VARCHART XNet offers to the user a variety of options to visualize data for different applications:

- ▶ The appearance of nodes (color, format, background, graphics file (*.bmp), etc.) can be specified by a variety of options.
- ▶ The node appearance is assigned to the nodes in dependence on the data. (The data-controlled assignment is defined via maps or filters in form of Boole expressions.)





- ▶ Several data fields can be displayed in a node in any order, size, font etc.
- ▶ The appearance of links can be varied.
- ▶ The four different link types (FF, FS, SF, and SS) are supported graphically. The links can be annotated.
- ▶ Positions of nodes and links can be kept in data fields to be stored and restored.
- ▶ Auxiliary nodes can be positioned, that is, nodes can be placed in the same rank as their predecessors.
- ▶ Project activities can be scheduled via an integrated scheduling module (including floats, critical path etc.)
- ▶ The VARCHART XNet control can be inserted into a HTML page so that it will be visible in a browser.

The diagrams can be customized via the property pages. The powerful Application Programming Interface offers an amount of further options that can be modified at run time. You can set all options to be adjusted by the user. Events let your application react to your customer's interactions (for example, to validate data). The Application Programming Interface contains an amount of properties, methods and events.

Technical Requirements:

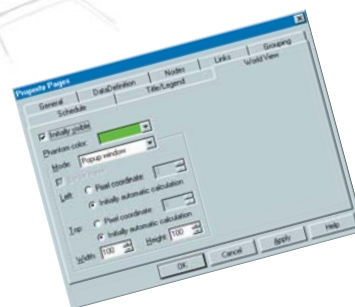
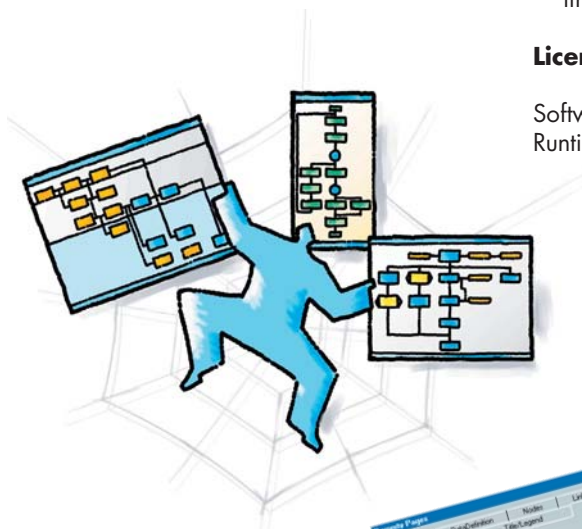
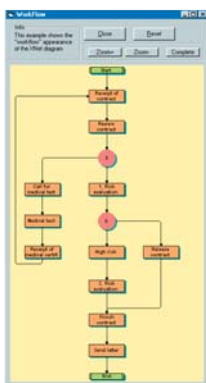
a 32 bit operating system Microsoft Windows 9x/NT/2000; a development environment that supports the integration of ActiveX such as VisualBasic, VisualBasic for Applications, VisualFoxPro, Visual Objects, Delphi, Centura, Oracle Forms, Progress, HTML (JavaScript or VB-Script), C, C++, etc.

Services:

- ▶ ActiveX component including documentation, tutorial, and online help
- ▶ Maintenance contract
- ▶ Hotline support
- ▶ Training classes
- ▶ Functional extensions on request
- ▶ Free trial version for download including 30 days hotline support

Licensing concept:

Software Development Kit plus Runtime Fees, based on volume



NETRONIC Software GmbH
 Pascalstrasse 15
 52076 Aachen
 Germany
 Phone +49 24 08 141-0
 Fax +49 24 08 141-33
 Email sales@netronic.com
 www.netronic.com